



Work environment

Episode I: The SCRUM Menace

July 28th, 2016



What?

- Personal view on [Creating Effective Teams](#)
- Communication is key
- Surviving a team
- Someone else's team

Why?

Rants of a tech lead 

Each role is equally important

It's not you, it's me!

The team is more stable, think about the team first.

Creating Effective Teams

Don't blame others
(not even "git blame"?)

Get involved

No bragging

Active listening

Support Group
(ideas, open-minded)

Communicate

Based on a true story



Our servers are experiencing issues. Please come back
later.

We were
working...

← And this
happened!

Based on a true story

What is my biggest challenge when dealing
with other people?

?

?

?

Emotions unrelated to work!

I CANNOT READ YOUR MIND!

?

?

???

Based on a true story

When I clearly explain something
and they don't understand.

Why?

THEY CANNOT READ MY MIND!



Communication is key

The biggest challenge is to figure out how many keys are needed because of the increasing number of doors.

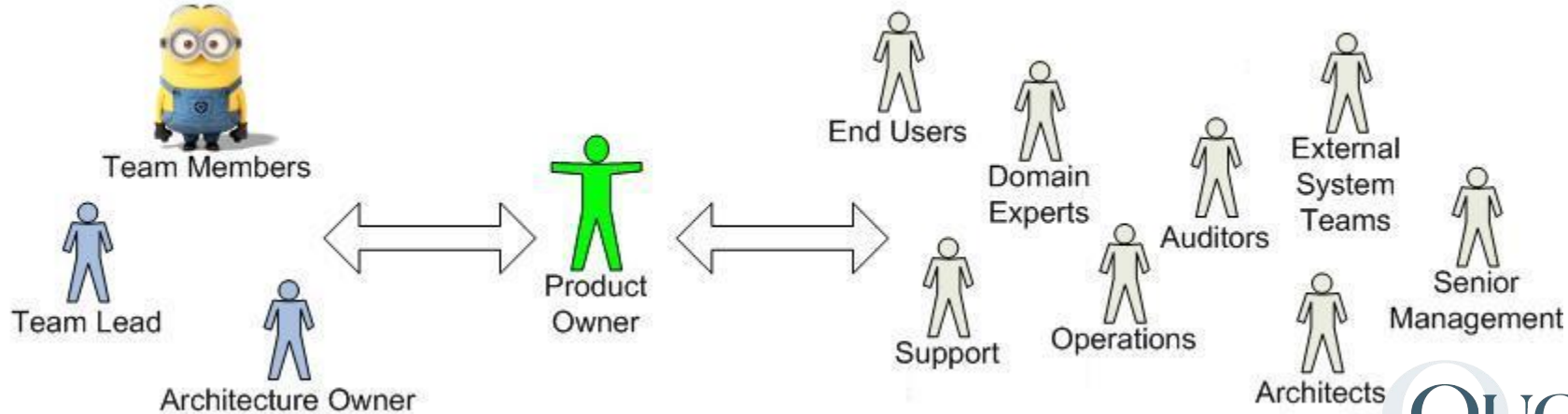
Communication is key

What if there is a master key, and the doors should make sure the key opens them?

This is the contract. You want to play this game, these are the rules you need to follow.

Surviving a team

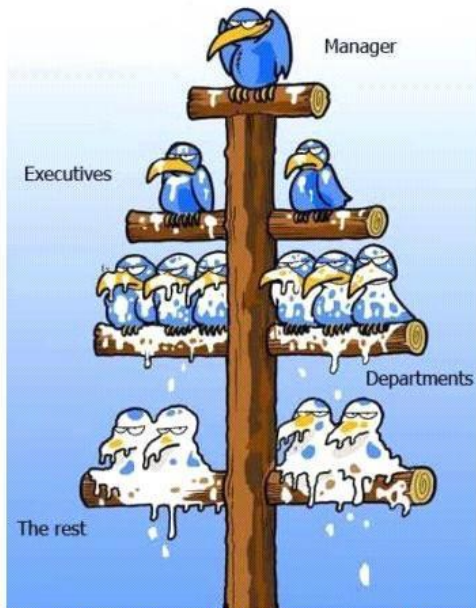
Everyone would like the team to be like they want.



Surviving a team

The best flow chart ever

Never seen a Flow Chart described so clearly.



When top level guys look down, they see only shitheads;
When bottom level guys look up, they see only assholes...

Another way to see a team.

Which one do you prefer?

Surviving a team



How the customer explained it



How the Project Leader understood it



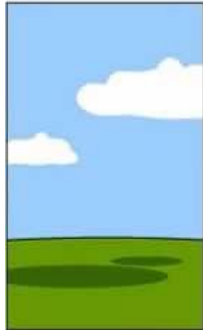
How the Analyst designed it



How the Programmer wrote it



How the Business Consultant described it



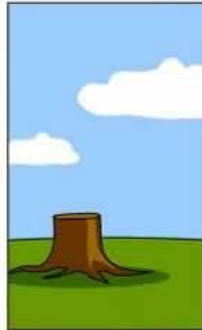
How the project was documented



What operations installed



How the customer was billed



How it was supported



What the customer really needed

What's each member expectations?

Someone else's team

Sprint planning in the making...

What are the challenges when dealing with people from the client?

When you are their boss...

...but not really **THEIR** boss!

It's not you, it's me

Has anyone ever said this to you?

What about in a workplace?

At the end of the day



Let's all
play the
same
game.

At the end of the day



And
yes...
we
missed
that
homerun!

Outside of the team

The project is only one part of what we do. We also interact with people not on the project, but as equally important.

HR

\$\$\$ Timesheets \$\$\$

The WHOLE Team

When you make other's people job easy, they will make yours easy too.

Honestly, I'm here to work, not to make sure everyone is my friend. It's not true in life, it's surely is not true in a workplace. We can try to be friendly, but we cannot expect everyone to be friends.

Other readings

[Sprint Duration](#)

[Creating Effective Teams](#)

[Rants of a Tech Lead](#)

Questions & Comments

BUT FIRST



This page is intentionally left blank